



# ST PAUL'S COLLEGIATE SCHOOL GYMNASIUM

Advertising Feature



St Paul's Collegiate Gymnasium North East View

## Students, community to benefit from school facility developments

To meet the ever-increasing training and curriculum requirements St Paul's Collegiate School in Hamilton has begun a joint gymnasium and astroturf project.

The project sees the relocation and refurbishment of the school's original gymnasium, the construction of a new purpose built gymnasium, the development of an international standard water-based hockey turf and the re-landscaping of the existing swimming pool complex.

The new gymnasium will include state-of-the-art indoor training and competition facilities for a range of sports, a weight training room to the standard of a commercial gymnasium, two glass-back squash courts and two indoor cricket practice wickets.

St Paul's Collegiate headmaster Greg Fenton said the new facilities would provide a superb resource for students, staff and the community.

"With the increasing need for specialised facilities for the physical education curriculum, St Paul's students will have immediate on-site access to modern fitness training equipment; our boarding students will have enhanced recreation facilities; sport teams including our many cricketers would have year round indoor training facilities. Our hockey community is really excited about having an international quality surface to practice and play on," said Greg.

The hockey turf will provide a top-class facility for the school's hockey players. This facility is much needed in the north-eastern corner of the city. Base works, irrigation, and lighting for the facility will be started and completed from December to February. The turf will be installed by Tiger Turf using their premier water field product TT37 — the same as that at the Waikato, Auckland, North Harbour and Canterbury hockey centres.

New Zealand hockey coach and former international Blacksticks player Darren Smith has indicated he's looking forward to the opportunity to train with St Paul's teams when the facility is operational. Darren noted

that with hockey in the Waikato district experiencing huge growth, this will be a welcome new surface to the region.

The re-landscaped pool area will provide much needed shade, making the pool area more pleasant to use and protect students, swimmers and spectators from the damaging effects of the sun.

The new developments will ensure St Paul's Collegiate students will have almost everything they need right on site to help them stay fit and enjoy their chosen sport — whether they play at social or competition level.

The new facilities will also provide a range of benefits to the wider community by providing access to an international standard water hockey turf and top-level indoor sports facilities for basketball, volleyball and badminton. Interest has already been expressed by a number of community sporting groups wishing to use the facilities.

Building company Livingstone and architects Chibnall Swann were engaged on a design-build basis for the project. Extensive research into the design layouts, buildability and materiality was carried out by the two companies.

While Chibnall Swann is the design manager, Livingstone is project managing the construction, including strict cost control management.

One of the main focuses for the new gymnasium is the flooring which meets international sporting competition standards. The time and research put into the flooring reflects the high support that St Paul's wishes to provide to the students and community.

Time frames are critical and Livingstone has achieved these tight time frames by overlapping the construction phase with the design phase to deliver the finished project by July 2007, as well as delivering the project to an agreed budget.

For functionality purposes, it was proposed that the

existing gym be relocated to the other side of the school. This process was a spectacular effort which involved four trucks and a total of three weeks to complete. The existing gym was successfully relocated in time for students to carry out their end of year exams. The refurbished swimming pool is also on track to be in full use again at the end of January 2007.

Due to the size of the project it was essential to pour the concrete tilt slabs for the gym on-site and be mindful of timing and deliveries of all major components, such as steel deliveries.

Building a gym of this size is particularly challenging due to working within the existing surroundings, such as tennis courts, a cricket field and curious students. Therefore, the nature of the project also required extra high health and safety practices.

Livingstone and Chibnall Swann are excited to be involved in this high profile project with a school that is committed to offering its students the very best quality facilities.

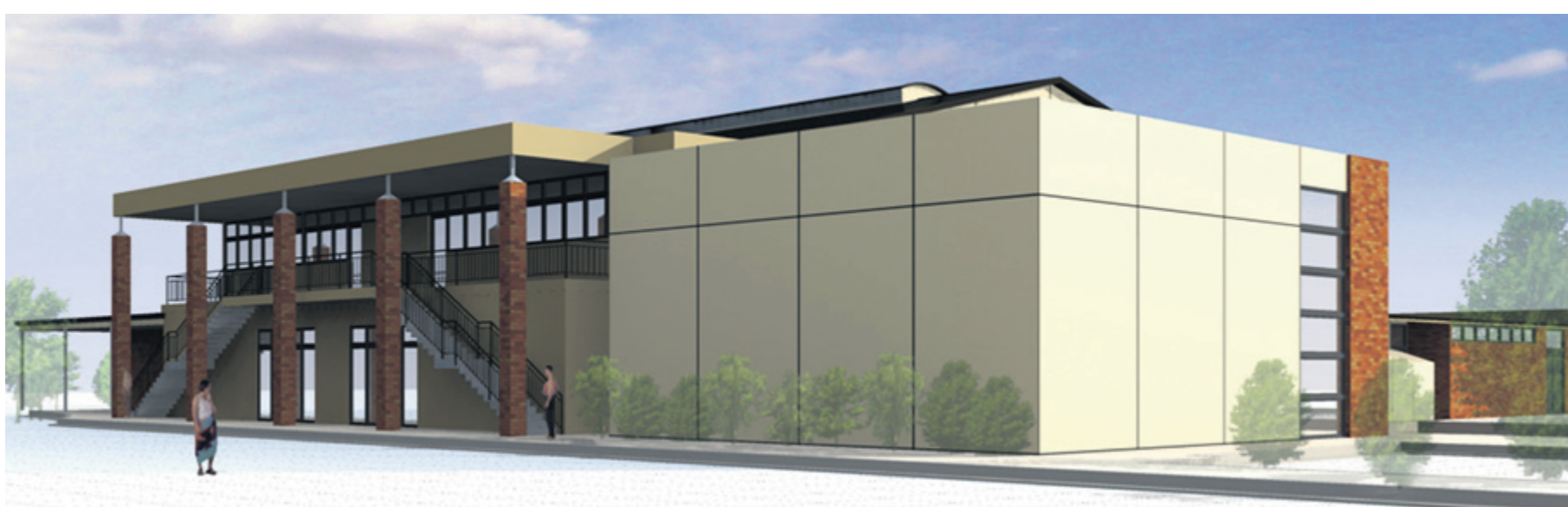
Chibnall Swann co-director Martin Swann said a complex design brief, coupled with the need to fit into the schools operating timetable had seen the project staged and programmed into logical achievable phases. This has allowed the school to continue to function as normal while only suffering minimal disruption.

"Coupled with the functionality is the aesthetic requirement, one where the design is to blend in and reinforce the existing school architecture and built environment," said Martin. "The resultant built form will be a culmination of a long design exercise and will form a vital and integral part of the schools 2009 master plan."

The turf and pool complex are expected to be completed in March. The new gymnasium is due for completion in July.



TEAM ARCHITECTURE



Livingstone and Chibnall Swann are excited to be involved in this high profile project with a school that is committed to offering its students the very best quality facilities.

